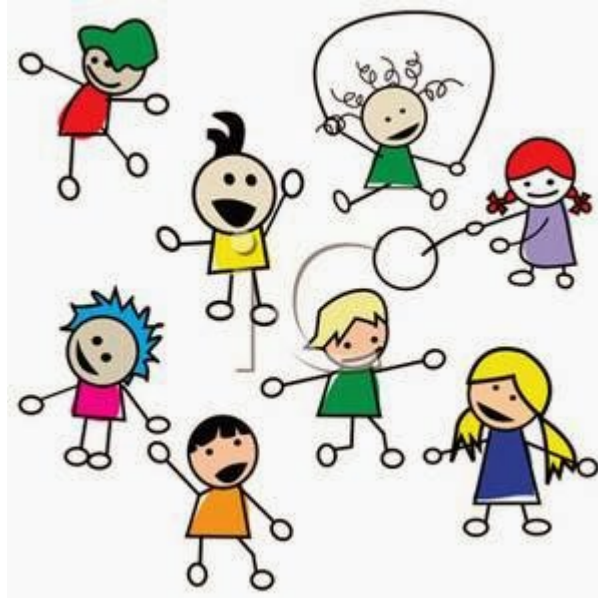


Always Aiming High



Welcome to Reception
Croeso i'r Dosbarth Derbyn
2026 - 2027



Always Aiming High

Ewloe Green has an inclusive ethos with a concern for all involved in the daily life of our school. As a school in Wales, we embrace its language, culture, traditions and heritage. In partnership with parents, carers, governors and the local and wider communities, we aim to provide the best possible educational opportunities whilst nurturing children in the Christian faith. At the same time, we recognise and respect the different faiths and cultures reflected within our school, community and in the wider world.

Our aim is to...

Ensure that Ewloe Green is a happy school where children are central to our thoughts and actions, where they feel safe, secure and confident and where every child matters, is valued and successful.

Ensure that we strive to achieve the highest possible standards through best provision of teaching for learning.

Ensure that we provide a broad and balanced curriculum, which offers wider opportunities for children to extend their talents, knowledge, skills and understanding appropriate to the needs of the individual child, both within and outside of school.

Ensure that the learning environment is stimulating, challenging and supportive, where children are encouraged to question and to explore, developing their independence, collaboration and enjoyment of learning.

Ensure that everyone is respectful of others, tolerant of differences in beliefs, cultures and abilities in order to nurture confidence, self-esteem, and moral values and to prepare children to be model citizens within a multicultural society, aware and supportive of others less fortunate.

Ensure that all children have equality of opportunity and access to school life.

Ensure that all stakeholders have due regard for their own health and well-being and care for the world around them.

Ensure that everyone in our school family and visitors too, are welcomed, valued and are encouraged to work in partnership with the school to support our children.

Welcome to Ewloe Green Reception Class. Beginning full time education should be a happy and exciting time for you and your child. The following information will help you as parents support your child in the transition from Nursery to Reception.

The Reception day extends the curriculum your child will have begun in Nursery. Indoor and outdoor learning activities are carefully planned to ensure progression in each area of learning. Outdoor activities form a large part of the school day so children should always bring a suitable coat to school.

Please remember to clearly label all of your child's uniform.

Please remember it is important that your child feels happy and secure and leaves you knowing that you will be there to greet him/her at the end of the day. It would be of great benefit if you stand in a similar place on the yard at the end of each day, particularly at the start of the year as this will help both your child and staff locate you!

Please be prompt as a late collection can cause distress for children.

Our School Day starts at 8.40am (doors open between 8.30am and 8.40am). The School Day ends at 3.10pm.

If your child is unwell, please keep him/her at home. Please text, telephone or email the school on the first day of your child's absence with a brief explanation for their absence.

Snack Time

Snack time is an enjoyable part of the morning for children. Please send your child to school each day with one piece of snack (fruit or vegetable). Please can this be in a bag/container with your child's name on. Containers will come home with your child at the end of the day. Please send in a water bottle for your child to use in school each Monday. These will be emptied and refreshed daily and sent home with your child on a Friday. Please ensure your child's name is on the bottle. Milk will be provided free at school.

Please inform us if your child has any allergies.

P.E.

P.E for Reception pupils will be **Wednesday** and **Friday** each week. On these days pupils should come to school wearing jogging bottoms, sweatshirts, white or yellow T-shirts and trainers. Pupils should wear shorts under their jogging bottoms. Please ensure pupils have velcro fastening trainers and no laces.

Lunchtime

All Reception children are entitled to a free school meal each day. More information about the menu will follow in September.

You will be able to view the school meals via the School Gateway App. We kindly ask that you order your child's meals with them from home in advance. Cut off time for ordering school meals is 8.00am on the day.

If you prefer your child to bring their own packed lunch from home please try to ensure that the contents are healthy and nutritious. Lunchboxes will need to be labelled with your child's name.

Reading Books and Phonics

Your child will bring home a new reading book every **Monday and Thursday**. Book bags/books are to be brought into school **every day**. Your child will read with a teacher or teaching assistant twice a week. Please share your child's reading book every day at home and practice Key Words which will be in the front of the reading log. If you would like ideas for activities and games to play with your child there will be information on the class web pages on the school website. Ewloe Green C.P. uses the Read Write Inc scheme to support with phonics learning.

Digital Learning

The Welsh Government have developed an online platform 'Hwb' which every child in Wales is entitled a log on to. Children's log ins will be sent home later in the year so you can access this with your child from home should you wish.

Dil a Del

To support Welsh learning children will, from time to time, bring home a Welsh dragon puppet and a workbook. If your child brings these home, please can you write what your child and the dragon did over the weekend. Please can you include a couple of photographs and a few Welsh words/phrases. Your child will then share this with the rest of the class.

By working together your child's first year in school should be a happy and successful one, providing a firm foundation upon which the building blocks of future learning will be laid.